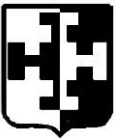




**THE UNITED BENEFICE of ST LUKE'S,  
ENDON with ST CHAD'S, BAGNALL**



*"Sharing God's Love"*

Vicar: Rev Alan Betts Tel: 01782 502166

[alan@endonstlukes.org.uk](mailto:alan@endonstlukes.org.uk) [www.endonstlukes.org.uk](http://www.endonstlukes.org.uk)

**June 2018**

"But the Counsellor, the Holy Spirit, whom the Father will send in my name, will teach you all things and will remind you of everything I have said to you." *John 14 v 26*

*Saturday  
June 2<sup>nd</sup>*

***The Holy Spirit  
and You!***

*talks  
prayer*

**ALL WELCOME**

Starts 2:30 pm: Meet for a cuppa.

Talks start 3:00 pm

There will be a bring and share tea

Finish about 6:30 pm

Join us for all or part of the day.

**"I will pour out my Spirit on  
all people". *Acts 2 v 17***

*Be renewed and  
refreshed*

# Services for June

## ST LUKE'S

|                  |   |
|------------------|---|
| 3 <sup>rd</sup>  | 9.15am MORNING PRAYER – Roger and Barrie<br>11.00am CONNECTIONS at St Luke's Primary School |
| 10 <sup>th</sup> | 9.15am HOLY COMMUNION – Rev Alan<br>11.00am CONNECTIONS at St Luke's School                 |
| 17 <sup>th</sup> | FATHERS' DAY<br>9.15am MORNING PRAYER –<br>11.00am CONNECTIONS at St Luke's Primary School  |
| 24 <sup>th</sup> | 9.15am HOLY COMMUNION – Rev Alan<br>11.00am CONNECTIONS at St Luke's Primary School         |

## ST CHAD'S

|                  |   |
|------------------|---|
| 3 <sup>rd</sup>  | 9.00am HOLY COMMUNION BCP – Rev Alan<br>10.45am FAMILY SERVICE - the team |
| 10 <sup>th</sup> | 10.45am PRAISE & PRAYER – Kath & Muriel F                                 |
| 17 <sup>th</sup> | FATHERS' DAY<br>10.45am ALL AGE HC – Rev Alan                             |
| 24 <sup>th</sup> | 10.45am MORNING PRAYER – Kath, Muriel F & Terry Bagguley                  |

## MIDWEEK ECUMENICAL HC SERVICES

Wednesdays at 9.15am

June 6<sup>th</sup> and 20<sup>th</sup> at EMC

13<sup>th</sup> and 27<sup>th</sup> at ESL

---

## IMPORTANT NOTICE

*To comply with the new GDPR (General Data Protection Regulations) legislation we have had to review how we handle data. Everyone on the electoral roll will receive a letter within the next few weeks.*

*Please can you read the letter and return it ASAP.*

*Our data policy will be available in church and on the website.*

*Rev Alan, Roger Simpson*

## **The Bishop of Wolverhampton's Pastoral Letter World Cup Ties**

I have been spending time going to junior schools with my friend Imam Rashid. We do assemblies dedicated to promoting the common bonds between our faith traditions. Hopefully we are a visual symbol of how respect and affection can exist between committed people of different faiths. Invariably, in Wolverhampton, it feels as if we are preaching to the converted, as we address schools brimming with ethnic and religious diversity. And the questions the young children ask are always curious or sympathetic, never hostile.

I always leave these assemblies filled with hope for the future of multi-cultural Britain, believing that we have the possibility of creating a wonderfully diverse society based on our traditional British values of tolerance and fairness. But I am not naïve enough to pretend that we have not still a long way to go. During the last year I have spoken out against racism and far right extremism on a couple of occasions, and while the angry emails and letters I have received as a result have been small in number, I know they are representative of a bigger minority who would share similar views. What my correspondents have in common are views which reflect a mixture of fear and ignorance concerning people of different races or faiths. I rather wish that I could have taken them to the Molineaux, Wolves' football stadium, for the last home game of the season, to witness the celebrations as the Championship Trophy was presented. There we were 30,000 fans, singing and waving our flags, all sharing in the joy of our team's achievement and the pride it has brought to our City. And as I looked round I could see people of many different

races, all ages, all experiencing exactly the same emotions and joined together by a common bond.

It will be the same when England plays in the World Cup later this month. In clubs and bars and in front of giant TV screens, the same scenes will be played out as people from every religion and background, find themselves cheering the same team for the same reason, and sharing triumph and disaster together.

And when we come to mark Remembrance Day, the tone and atmosphere will be very different but the diversity of those coming together will be just as great. As it should be of course, not only reflecting the multi-cultural Britain of today, but also the fact that countless people of different races and religions fought for this country, at home and most particularly abroad, during both World Wars.

My hope is that such shared experiences may cause those of us not fortunate enough to be immersed in the world of the City Junior School, where religious and racial differences are all but invisible, to reflect on whether our common humanity is not a God-given tie that binds us together? And if we only took that more seriously we could use it as a safe place from which to explore our differences.

***+ Clive Wulfrun June 2018***

## **DO YOU REQUIRE A CLEANER?**

Hours and rates of pay to be discussed.

Weekly or occasional cleaning to suit both parties.

Contact Lyn:

Mobile 07891 213284 or speak to her in church

# PASTORAL TEAM

Please contact Shirley Brindley on 504089 if you are available for pastoral visiting.

## HILLSWOOD LODGE VISITS

Meet at Vicarage 10.50am for 11.00am

Next dates:

**21<sup>st</sup> June and 12<sup>th</sup> July**

Please sign the sheet at the back of church.

## NEXT MEAL OUT

Following on from our very successful lunch out earlier this year, members of the pastoral team are going out again on **12<sup>th</sup> July** at Greenways Golf Club at 12.00noon.

Everyone is welcome.

There will be more details on the notice board shortly.

---

From Sheila Hurst....

## Summer Heating

As usual the heating will be off in church for the Well Dressing to help to preserve the flowers. It will not be turned on until the autumn.

Don't forget to bring a jacket on cooler days.

---

**Outside a hotel: "Help! We need inn-experienced people"**

George <")))><

*Rev'd George A Fisher, Lichfield Diocese Director of Mission*



## **All Welcome at 11.00am every Sunday**

in St Luke's Primary School for 35 minutes followed by refreshments, time to chat and play

---

## **Volunteers Are Needed please!**

Nathan, Dave, Barrie Jackson and Deb Podmore are reaching out to the young people of Endon to provide them with somewhere to go on a Friday evening. We are proposing to open the church on a Friday night from 7.30 to 8.30pm to provide a safe, warm place for them to chat and have a drink/biscuit etc., but we need volunteers to help. If we can get enough support it would be on a rota basis, but we need at least 4 adults to be in the church each week. Nathan and one other person (probably me) will go out into Endon to tell the teenagers that the church is open if they want somewhere to go.

For more information contact Deb 773383.





# CANDLE DEDICATIONS for JUNE

For £2.50 you can keep the Candle of Hope or the Sanctuary Light burning for a week with a dedication. Contact Shirley Brindley on 504089 if you would like a particular date.

|                        | CANDLE OF HOPE  | SANCTUARY LIGHT  |
|------------------------|---|--|
| <b>3rd</b>             | Mabel McGrath in loving memory of a dear and loving husband, Don  | No dedication  |
| <b>10<sup>th</sup></b> | Sylvia Bradshaw to celebrate the 15 <sup>th</sup> birthday of her grandson George                                   | June and Peter Pope  |
| <b>17<sup>th</sup></b> | Sheila and Stan Hurst to celebrate the 18 <sup>th</sup> birthday of their granddaughter, Lauren (17 <sup>th</sup> ) | Linda Foster in loving memory of her dad on his birthday (23 <sup>rd</sup> ) |
| <b>24<sup>th</sup></b> | Shirley Brindley in loving memory of a very dear Mum and Dad  | Marilyn Plant to celebrate the birthday of her son, Nicholas James.          |



## JUNE GREETINGS to

June Pope (2<sup>nd</sup>), Margaret Barlow (3<sup>rd</sup>), Fran Dale (4<sup>th</sup>), Rachel Betts (8<sup>th</sup>), Gail Stone (9<sup>th</sup>), Mary Goodson (13<sup>th</sup>), Sophie Brough (16<sup>th</sup>), Chris Boulton (17<sup>th</sup>), Sarah Brindley (19<sup>th</sup>)

*If you would like your own or a family birthday included please here contact Ros 504137*

# NEWS FROM ST CHAD'S, BAGNALL



## Plant Bring and Buy:

Saturday 28<sup>th</sup> April dawned fine and clear and the garden and house were looking quite tidy for our coffee morning and plant bring and buy. We were hoping that people would be coming to support it, and we were not disappointed. It was great to see such a good turnout with people bringing plants, cakes and other things to sell. We hope that everyone enjoyed it as much as Patrick and I did.

We raised about £165 for church funds which is very good, so many thanks to everyone for their support.

**Freda**

*"Everyone there was friendly and sociable and Peter and I enjoyed the morning."* **Joan**

## Money, money, money!

Do you realise what a talented lot of people there are at St Chad's? I went to church the other week and had to take my purse bulging at the seams with cash. Not, as you might expect, for the collection (I pay by standing order) but for all the goodies on sale in the porch. I bought 3 pots of jam (Brian can't get enough of Freda's jam!), a jar of marmalade (far superior to shop bought), half a dozen eggs (love the different colours), a book from the library (a Mary Stewart that I hadn't read) and finally a browse through the greetings cards. A good job I had my shopping bag with me—far superior to the supermarket and all the money goes to church funds. How good is that?

## Pastoral Care:

We had a very good meeting on Wednesday 14<sup>th</sup> May with 7 people present and apologies from 4.

We have lost one member of the team in the death of Valerie Whittaker, but we are happy to welcome Esther Clarke and Pauline Proudman to our team.

Our pastoral care team is a very dedicated bunch of people who try to make life a little better for those that they contact, be this in the form of visits, phone calls, letters or cards.



Sometimes it is enough to know that someone is thinking of you. If you know of someone that would benefit from this type of contact, please don't hesitate to get in touch with me (Sheila Tipper). They don't have to necessarily be a member of our church, just someone living locally who is having a bit of a rough time and who would like to see or hear from a friend.

## Village queens:

We're beginning to think of how we're decorating our church for the annual Bagnall village fete on June 30<sup>th</sup>. As you know, we're making a poppy cascade and the theme for the church this year is "red, white and blue". Each display must incorporate a poppy of any medium.

I was thinking of possible ideas for a display and being quite patriotic and a firm believer in the monarchy, I was thinking along the lines of the queen, which then made me remember my research into the queens of Bagnall.

I've managed to go back as far as 1922 when Bagnall had its own horticultural queen:



The tradition continued until 1930 with Margaret Clowes taking over the royal duties:



We take a break then until the advent of our "modern" church rose queens, introducing Ann Bossons in 1952:



How things have changed! Can you believe that even this is 66 years ago!  
Hope you enjoyed your trip down memory lane.

## St Chad's Diary Dates:

Church is open for coffee, biscuits and a chat between 10.45am and 12.15pm every Wednesday.

If any of you can spare half an hour, just go in for a cup of coffee and give the coffee maker a reason to be there!

Creative Corner craft club meet on **Mondays 4th and 18th June** at 1pm to 3pm at The Stafford Arms

Tuesday study group - 7.30pm—9.00pm—all welcome

**Saturday 30th June**—village fete, church to be decorated in red, white and blue and don't forget the poppies!

**Saturday July 14th**—advance news of choral concert in church.

### SHOPPING TROLLEY PLUS

DO YOU STRUGGLE WITH YOUR SHOPPING?  
NEED COMPANY OR JUST FANCY A SOCIAL OUTING

WE CAN HELP

**Shopping Trolley Plus so much more**

*services include*  
*Shopping accompanied or completed for you*  
*escort to appointments*  
*collection of prescriptions*

*company & social outings*  
*household light cleaning*

Competitive rates and over 20 years experience in social care and health

Give us a call today on 07779309094 / 07813925531  
07773664289



# Fair trade status

St Luke's is a fair-trade church. If you donate items to the catering cupboard, please check that they are Fair Trade, Ethical Tea Partnership or similar organisations that guarantee small traders and workers are not disadvantaged.

---



## **Warmest congratulations to Nathan and Rachel O'Neill**

married by Rev Alan at St Luke's on the same day as a certain other two people were also making their vows in St George's Chapel, Windsor!

Nathan is our youth worker and helps to run our Connections service at St Luke's school every Sunday morning at 11.00am.

May the Lord bless them both richly in their new life together where they will be based in Derby for the time being.



**LEEK MUSICAL THEATRE COMPANY  
AND  
CENTRE STAGE THEATRE COMPANY**

**PROUDLY PRESENT**

**A JOINT CONCERT**

**'SONGS, SCENES AND SOLDIERS'**



**AN EVENING OF SONGS, POETRY AND PLAY EXTRACTS  
TO COMMEMORATE 100 YEARS SINCE WORLD WAR ONE  
ARMISTICE AND THE SUFFRAGETTES**

**THURSDAY 14<sup>TH</sup> AND FRIDAY 15<sup>TH</sup> JUNE 2018**

**7.30PM**

**WESTWOOD FIRST SCHOOL, LEEK**

**TICKETS AVAILABLE FROM:**

**SOCIETY MEMBERS**

**LEEK POST OFFICE**

**E GRAINGER, DERBY STREET**

**[WWW.LEEKMUSICALTHEATRE.COM](http://WWW.LEEKMUSICALTHEATRE.COM)**





# Home Groups

are a way of studying the bible in a relaxed and friendly atmosphere. We can ask the questions that we do not always have time to on a Sunday. Not only do home groups help us on our journey of faith but they also strengthen the relationships within church. At the moment a group meets at James &

Ros's on a Monday evening and a group meets at Bagnall Heights on Tuesday morning.

| Day   | Venue                           | Host                               | Leader                               | Time     |
|---|---------------------------------|------------------------------------|--------------------------------------|----------|
| <b>Monday</b>   | Claremont<br>St George's<br>Ave | James & Ros                        | Maryanne                             | 7.30pm   |
| <b>Tuesday</b><br>(NB 2 <sup>nd</sup> week of<br>the month, this is<br>replaced by HC on<br>Wednesday.) | Bagnall<br>Heights<br>Lounge    | Pauline Hart<br>/ Roger<br>Hampson | Barrie<br>Jackson<br>07564<br>555677 | 11.00 am |

---

**The Leek Phoenix Singers  
present**

## **MONTEVERDI'S VESPERS OF 1610**

**with the Phoenix Festival Consort featuring historical instruments  
and soloists from the RNCM**

**Saturday, June 9<sup>th</sup>**

**7.30pm**

**Leek All Saints Church ST13 5PT**

**Tickets £15 (£2 u18s)**

**available from Sue Wilson 01782 503811**





***Lest we forget...***

## **The Death Bed**

..... Someone was holding water to his mouth.  
He swallowed, unresisting; moaned and dropped  
Through crimson gloom to darkness; and forgot  
The opiate throb and ache that was his wound.  
Water—calm, sliding green above the weir;  
Water—a sky-lit alley for his boat,  
Bird-voiced, and bordered with reflected flowers  
And shaken hues of summer: drifting down,  
He dipped contented oars, and sighed, and slept.

.....He stirred, shifting his body; then the pain  
Leaped like a prowling beast, and gripped and tore  
His groping dreams with grinding claws and fangs.  
But someone was beside him; soon he lay  
Shuddering because that evil thing had passed.  
And death, who'd stepped toward him, paused and stared.  
  
Light many lamps and gather round his bed.  
Lend him your eyes, warm blood, and will to live.  
Speak to him; rouse him; you may save him yet.

He's young; he hated war; how should he die  
When cruel old campaigners win safe through?

But death replied: "I choose him." So he went,  
And there was silence in the summer night;  
Silence and safety; and the veils of sleep.  
Then, far away, the thudding of the guns.

*Siegfried Sassoon (1917)*

---

# LEEK FOOD BANK UPDATE



Thank you for your on-going support.

According to the website the most urgent items are currently:

- Biscuits
- Sponge puddings
- Small meat pies
- Custard

*Peter Davies, Leek and District Foodbank Project Coordinator*

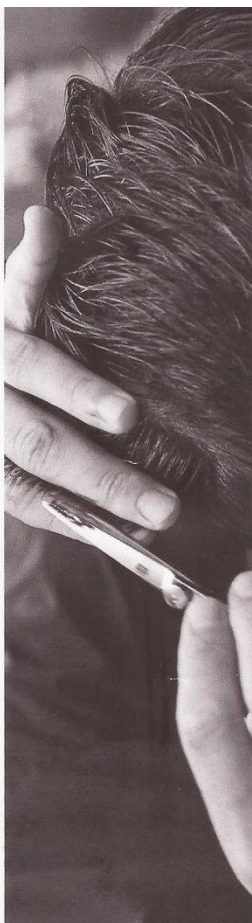


# Dan's



**B A R B E R S**

A F A M I L Y R U N B U S I N E S S



**APPOINTMENTS AVAILABLE  
MONDAYS & THURSDAYS FROM 4PM**

**OAP CUTS  
£6.00**

**NB Now closed on  
Mondays**

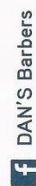
#### OPENING HOURS

|     |                       |
|-----|-----------------------|
| SUN | CLOSED                |
| MON | <del>10am - 6pm</del> |
| TUE | 9am - 5pm             |
| WED | 9am - 5pm             |
| THU | 9am - 3pm             |
| FRI | 9am - 5pm             |
| SAT | 8am - 3pm             |

**07500 545455**

2 Regent St,  
Leek, Staffordshire

Find us on Facebook



DAN'S Barbers

Xbox also available for the kids!

let us make  
your dream a reality...

we install kitchens,  
bathrooms, bedrooms,  
studies & media rooms

## The Kitchen Station

Station Building, 28 Leek Road  
Stockton Brook, Staffordshire ST9 9NH

**t: 01782 502106**  
**m: 07720 846 270**

**www.thekitchenstation.co.uk**

# June Prayer Focus

- For all affected by the 'Windrush' administration disaster
- For our youth worker Nathan O'Neill in his latest initiative in reaching out to young people in Endon on Friday nights
- The problem of loneliness
- Those suffering (including many businesses) in the wake of the nerve agent attack in Salisbury and all involved in the complex investigations
- International relations in the wake of what appears to be a new cold war with Russia
- All affected by recent disasters, fires, floods and terror attacks and all helping to re-build thousands of shattered lives
- All fleeing persecution to Bangladesh from Myanmar
- Medical teams and relief agencies
- Those starving in Nigeria, Somalia, South Sudan and all the aid agencies working there
- The problem of the millions of plastic bottles afloat in our oceans
- Brexit negotiations
- SYRIA, YEMEN, ISRAEL and PALESTINE: For an end to hostilities
- Healing for those in our church and community who have been in hospital recently and are now recuperating, thinking especially of Muriel Buckle and Jean Brough
- The work of our pastoral team
- Wisdom for world leaders in making effective decisions for world peace especially in recent negotiations with N Korea
- Those in our parishes who are ill and those caring for them
- For all refugees and asylum seekers
- All who have lost loved ones recently including our own Rev Alan
- Schoolgirls kidnapped in Nigeria and anguished parents
- For the abolition of slavery and female genital mutilation
- The Trussell Trust locally
- The unemployed or in work but not earning a living wage
- For all suffering from depression
- For all involved with the Chernobyl Project
- Our Vicar, PCCs and Pastoral Team and visitors to our church
- Our MPs and district and parish councillors



## Advertising Scale of Charges

1/8 page: £2.50 per month  
or £25 for 12 months

1/4 page: £5 per month  
or £50 for 12 months

1/2 page: £10 per month  
or £100 for 12 months

1 page: £20 per month  
or £200 for 12 months

If you would like to place an  
advertisement  
please contact Ros on 01782 504137  
or e-mail:  
[jandrbenson@btinternet.com](mailto:jandrbenson@btinternet.com)

## Carpet & Upholstery Cleaning

Curtains, Oriental Rugs,  
Leather Cleaning  
and Carpet & Fabric Protection

Eradicates Dust Mites and helps improve  
the air quality for Asthma sufferers.



**J. TAYLOR**

**Tel: 01782 502437**

## ST LUKE'S CHURCH BOOKINGS

Barrie Jackson is keeping the church diary.  
Please contact him on **07510 074097**.

*No charge is made for this newsletter but donations are welcome towards stationery and copying. Please see a warden or put your donation in the green box on the wall.  
You can 'gift aid' your donation if you pay tax (see Sheila Hurst).  
Thank you to all regular contributors.*

## DATA PROTECTION

Various phone numbers are printed each month on the back of this newsletter with the consent of those concerned. However to comply with the new regulations we need to renew consent. If you are happy to continue to have your phone number displayed on the newsletter please send an e-mail (or short letter) to me or to Alan to this effect as soon as possible and in any case in time for the next newsletter please. Many thanks. **Ros**

|  |              |
|--|--------------|
| Rev Alan Betts / Maryanne Lloyd                    | 502166       |
| Roger Simpson, St Luke's warden                    | 502006       |
| Maurice & Margaret Woolliscroft, warden's team     | 502390       |
| Alan & Maureen Payne, warden's team                | 504918       |
| Ann & Les Boulton, warden's team                   | 503162       |
| June Pope, warden's team                           | 503269       |
| John O'Rourke, warden                              | 261191       |
| Lyn Pickering, warden's team                       | 07891 213284 |
| Caryl Siegertsz, St Chad's warden                  | 07971 887039 |
| Sheila Tipper, St Chad's news contact              | 534647       |
| Kath Howell, St Chad's PCC chair / worship l'der   | 07971 887039 |
| Muriel Finney, St Chad's worship leader            | 302229       |
| Joe Porter   |              |
| James Benson, reader / Ros Benson, newsletter      | 504137       |
| Barrie Jackson, St Luke's PCC Sec / Administrator  | 07510 074097 |
| Deb Podmore, worship leader                        | 773383       |
| Suzy Jordan, music leader                          | 504589       |
| Steve Dale, St Luke's treasurer                    | 07894 098011 |
| Sheila Hurst, St Luke's Gift Aid Sec / MU rep      | 503622       |
| Neil Taylor, worship team                          | 07891 977662 |
| Shirley Brindley, candle dedications / pastoral tm | 504089       |
| John & Julie Gater, Chernobyl Children's Project   | 535000       |
| Sheila Simpson, St Luke's Electoral Roll Officer   | 502006       |
| St Luke's vestry                                   | 504864       |

**July 2018** newsletter will be in church on  
**Sunday, June 24<sup>th</sup>**

Please submit notices by **Tuesday, June 19<sup>th</sup>**  
either by e-mail [jandrbenson@btinternet.com](mailto:jandrbenson@btinternet.com) phone 504137  
or a note to Ros Benson.

The newsletter is published on the church website  
[www.endonstlukes.org.uk](http://www.endonstlukes.org.uk) (click on the 'News and Events' tab)

**If you would like a large print version  
please contact Ros.**